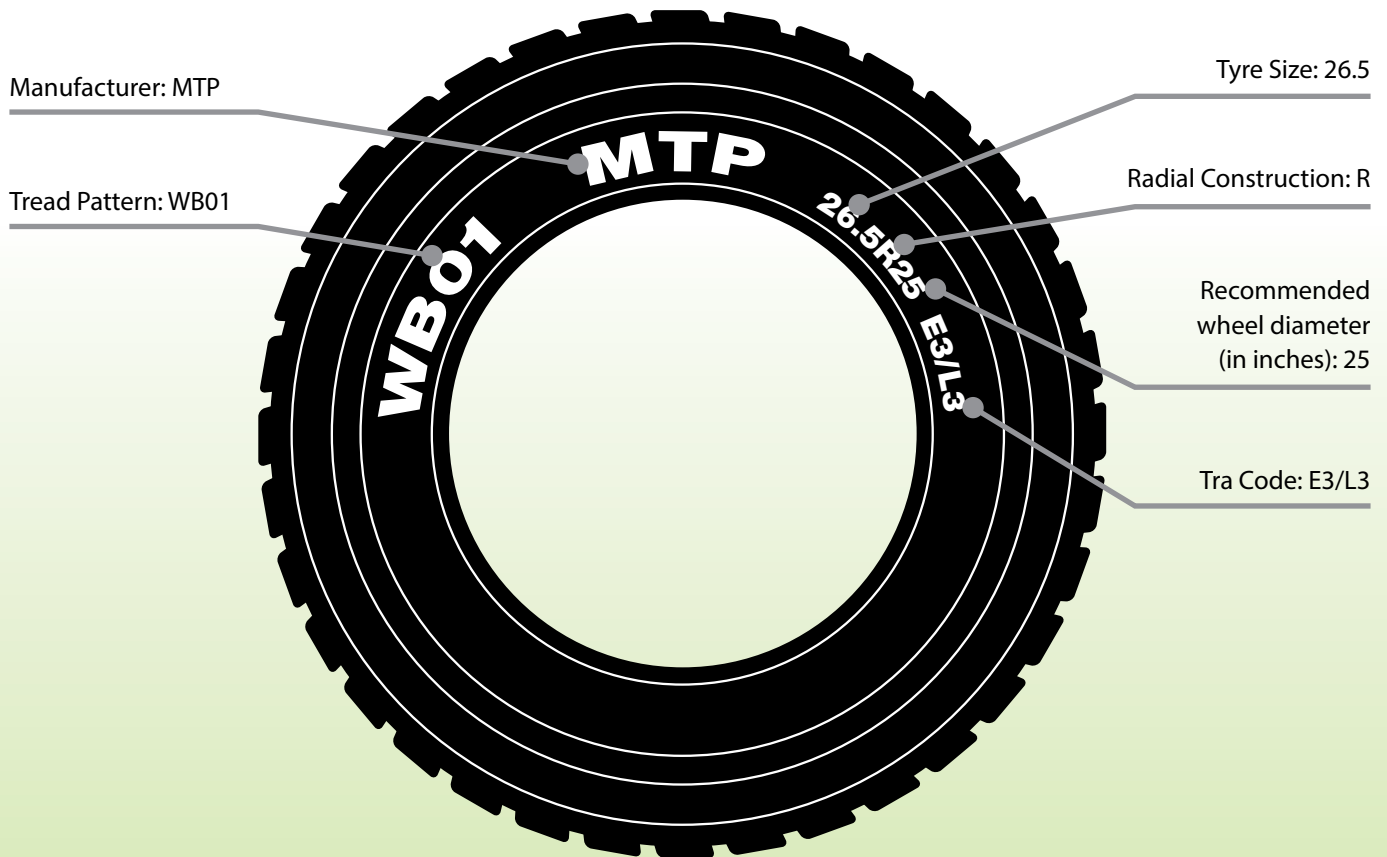


MTP Tyres **m** **t** **p**



Heavy-duty OTR tyres for challenging applications!

Tyre Sidewall Instructions



Service Classification

MTP tyres have a code number on them in order to identify and serve the function.

1 OFF THE ROAD EARTHMOVER

2 ★ ★ 200B **3** **4**E4 TYPE C **5**

6 MAX. LOAD 14000kg AT 525kPa COLD
30900LBS AT 76PSI COLD

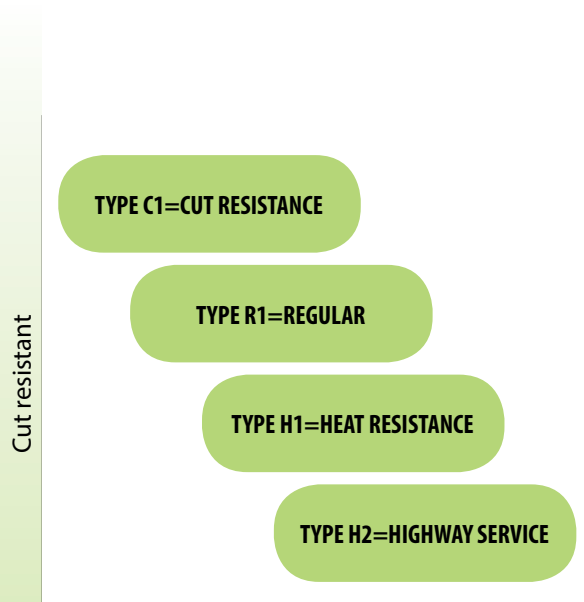
- 1** Use for service conditions. Earthmover tyres have different load carrying abilities depending on the service application, either 'loading' or 'transport'. Two conversion figures are given star rated tyres.
- 2** Star ratings indicate the strength of the casing and are similar to ply ratings such as Bias tyres. The table on the following page can be used as a guide for converting between the two.
- 3** Load Index/Speed Symbol
- 4** TRA code
- 5** Tyre specification code
- 6** Maximum load capacity



Tyre Specification Code

MTP Tyres follow the below Tyre Specification Code on it.

	E-Spec./L-Spec.			Highway
	C1	R1	H1	H2
385.95R25				•
445/95R25				•
525/80R25				•
14.00R24	•	•		
16.00R24	•	•		
14.00R25	•	•	•	
15.5R25	•	•	•	
17.5R25	•	•	•	
20.5R25	•	•	•	
23.5R25	•	•	•	
26.5R25	•	•	•	
29.5R25	•	•	•	
18.00R33	•	•	•	
35/65R33	•	•	•	
21.00R35	•	•	•	
24.00R35	•	•	•	



H1 construction available upon request. (E-spec. only)

Heat resistant

Conversion Table: Star Rating to Ply Ratings

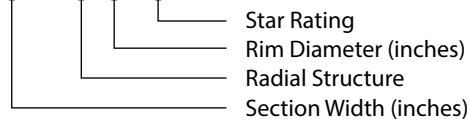
Size and Star Ratings	Corresponding PR Loading service/Transport service	Size and Star Ratings	Corresponding PR Loading service/Transport service
20.5R25 ★★	up to 24	24.00R35 ★★	up to 48
23.5R25 ★★	up to 28	17.5R25 ★★	up to 20
26.5R25 ★★	up to 31	13.00R25 ★★★	up to 28
29.5R25 ★★	up to 34		

Calculations based on TRA Standards

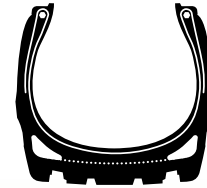
Identification of OTR Tyres

Regular

24.00 R 35 **



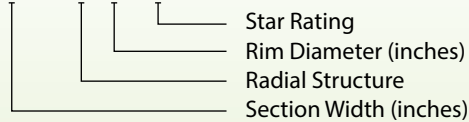
Tyre Aspect Ratio



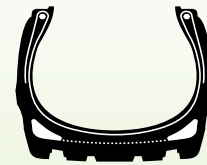
$$\frac{SH}{SW} = 0.95$$

Wide Base

29.5 R 25 **



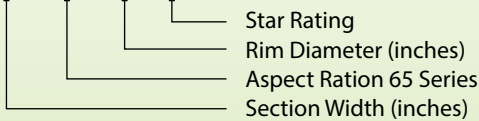
Tyre Aspect Ratio



$$\frac{SH}{SW} = 0.80$$

Super Wide Base

35 / 65R 33 **

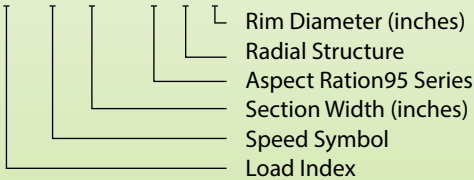


Tyre Aspect Ratio

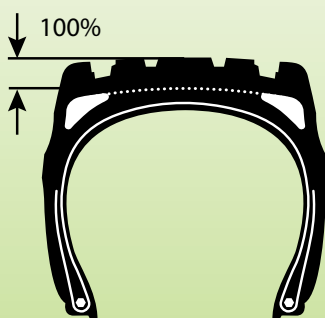


$$\frac{SH}{SW} = 0.65$$

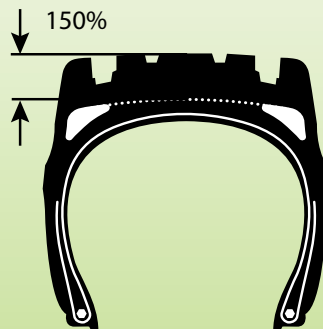
170 F 385 / 95 R 25



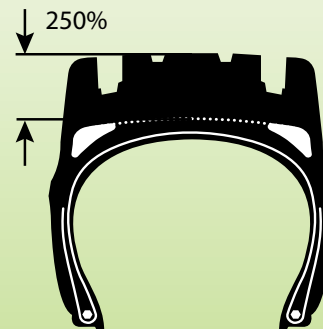
Comparison of Tread Depth



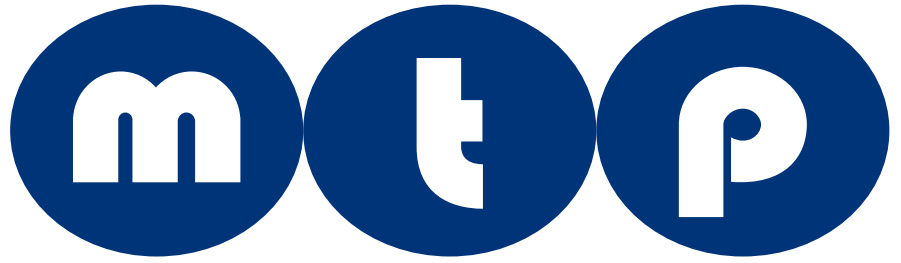
Regular Tread
E2/E3, L2/L3, G2/G3



Deep Tread
E4, L4/L4s, G4



Extra Deep Tread
L5/L5s



Load Index

The LOAD INDEX is a numerical code with the maximum carrying load capacity.

Load Index	KG	LBS	Load Index	KG	LBS	Load Index	KG	LBS	Load Index	KG	LBS
120	1400	3085	148	3150	6940	176	7100	5700	204	16000	35300
121	1450	3495	149	3250	7160	177	7300	16100	205	16500	36400
122	1500	3305	150	3350	7390	178	7500	16500	206	17000	37500
123	1550	3415	151	3450	7610	179	7750	17100	207	17500	38600
124	1600	3525	152	3550	7830	180	8000	17600	208	18000	39700
125	1650	3640	153	3650	8050	181	8250	18200	209	18500	40800
126	1700	3750	154	3750	8270	182	8500	18700	210	19000	41900
127	1750	3860	155	3875	8540	183	8750	19300	211	19500	43000
128	1800	3970	156	4000	8820	184	9000	19800	212	20000	44100
129	1850	4080	157	4125	9090	185	9250	20400	213	20600	45400
130	1900	4190	158	4250	9370	186	9500	20900	214	21200	46700
131	1950	4300	159	4375	9650	187	9750	21500	215	21800	48100
132	2000	4410	160	4500	9920	188	10000	22000	216	22400	49400
133	2060	4540	161	4625	10200	189	10300	22700	217	23000	50700
134	2120	4675	162	4750	10500	190	10600	23400	218	23600	52000
135	2180	4805	163	4875	10700	191	10900	24000	219	24300	53600
136	2240	4940	164	5000	11000	192	11200	24700	220	25000	55100
137	2300	5070	165	5150	11400	193	11500	25400	221	25750	56800
138	2360	5205	166	5300	11700	194	11800	26000	222	26500	58400
139	2430	5355	167	5450	12000	195	12150	26800	223	27250	60100
140	2500	5510	168	5600	12300	196	12500	27600	224	28000	61700
141	2575	5675	169	5800	12800	197	12850	28300	225	29000	63900
142	2650	5840	170	6000	13200	198	13200	29100	226	30000	66100
143	2725	6005	171	6150	13600	199	13600	30000	227	30750	67800
144	2800	6175	172	6300	13900	200	14000	30900	228	31500	69400
145	2900	6395	173	6500	14300	201	14500	32000	229	32500	71700
146	3000	6610	174	6700	14800	202	15000	33100	230	33500	73900
147	3075	6780	175	6900	15200	203	15500	34200	231	34500	76100

Speed Symbol

The SPEED SYMBOL indicates the speed at which the tire can carry a load corresponding to its Load Index under service specified conditions.

Speed Symbol	Speed (km/h)	Speed Symbol	Speed (km/h)
A1	5	B	50
A2	10	C	60
A3	15	D	65
A4	20	E	70
A5	25	F	80
A6	30	G	90
A7	35		
A8	40		

All Steel Radial Construction - Multifunctional

WB01



- ✓ MTP WB01 is designed for loaders, graders and dump trucks
- ✓ E3/L3 tread pattern for superior traction
- ✓ Optimal durability and enhanced working comfort



Size	TRA Code	Load Symbol	Max. Speed (km/h)	Load Index	Standard Rim	Tread Depth (mm)	Overall Diameter (mm)	Section Width (mm)	Max. Load Capacity (kg)	Cold Inf. Pressure (kPa)	Weight (kg)
15.5R25	E3/L3	**	50	160B	12.00/1.3	26	1275	16	4500	525	125
			10	169A2					5800	500	
20.5R25	E3/L3	**	50	177B	17.00/2.0	33	1490	21	7300	525	238
			10	186A2					9500	500	
23.5R25	E3/L3	**	50	185B	19.50/2.5	36	1615	24	9250	525	332
			10	195A2					12150	500	
26.5R25	E3/L3	**	50	193B	22.00/3.0	37	1750	27	11500	525	441
			10	202A2					15000	500	
29.5R25	E3/L3	**	50	200B	25.00/3.5	43	1875	30	14000	525	632
			10	208A2					18000	500	
21.00R35	E3	**	50	201B	15.00/3.0	44	2005	23	14500	700	586

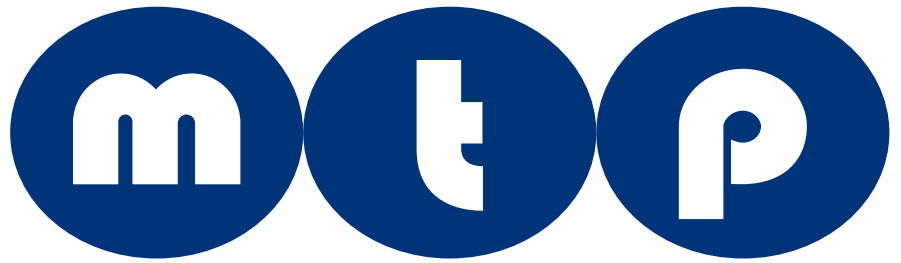
WB02



- ✓ MTP WB02 is designed for wheel loaders and articulated dump trucks
- ✓ The E3/L3 tread pattern provides excellent traction for demanding off-road conditions
- ✓ Special tread compound for optimal resistance against cutting and abrasion



Size	TRA Code	Load Symbol	Max. Speed (km/h)	Load Index	Standard Rim	Tread Depth (mm)	Overall Diameter (mm)	Section Width (mm)	Max. Load Capacity (kg)	Cold Inf. Pressure (kPa)	Weight (kg)
17.5R25	E3/L3	**	50	167B	14.00/1.5	27	1350	445	5450	525	157
			10	176A2					7100	500	
20.5R25	E3/L3	**	50	177B	17.00/2.0	29	1490	520	7300	525	228
			10	186A2					9500	500	
23.5R25	E3/L3	**	50	185B	19.50/2.5	36	1615	595	9250	525	322
			10	195A2					12150	500	



WB03



- ✓ MTP WB03 is designed for wheel loaders and articulated dump trucks
- ✓ E3+/L3+ tread pattern for improved traction in demanding off-road conditions
- ✓ Available in tyre sizes 23.5R25 and 29.5R25



Size	TRA Code	Load Symbol	Max. Speed (km/h)	Load Index	Standard Rim	Tread Depth (mm)	Overall Diameter (mm)	Section Width (mm)	Max. Load Capacity (kg)	Cold Inf. Pressure (kPa)	Weight (kg)
23.5R25	E3+/L3+	**	50	185B	19.50/2.5	44	1615	595	9250	525	350
			10	201A2					14500	650	
29.5R25	E3+/L3+	**	50	200B	25.00/3.5	50	1920	750	14000	525	583
			10	208A2					18000	500	

WB09



- ✓ MTP WB09 is designed for articulated dump trucks and loaders
- ✓ Excellent structure and deeper tread depth enhance safety and provides greater longevity
- ✓ Side wall protection and flotation are enhanced by the wide shoulder design



Size	TRA Code	Load Symbol	Max. Speed (km/h)	Load Index	Standard Rim	Tread Depth (mm)	Overall Diameter (mm)	Section Width (mm)	Max. Load Capacity (kg)	Cold Inf. Pressure (kPa)	Weight (kg)
23.5R25	E3+/L3+	**	50	185B	19.50/2.5	38	1615	595	9250	525	340 NEW!
			10	195A2					12150	500	
26.5R25	E3+/L3+	**	50	193B	22.00/3.0	40	1750	675	11500	525	466 NEW!
			10	202A2					15000	500	
29.5R25	E3+/L3+	**	50	200B	25.00/3.5	44	1875	750	14000	525	590 NEW!
			10	208A2					18000	500	

All Steel Radial Construction - Multifunctional

WB04

- ✓ MTP WB04 is designed for wheel loaders and articulated dump trucks
- ✓ E4 tread pattern for excellent traction in challenging off-road conditions
- ✓ Sidewall protection and flotation are enhanced by the wide shoulder design



Size	TRA Code	Load Symbol	Max. Speed (km/h)	Load Index	Standard Rim	Tread Depth (mm)	Overall Diameter (mm)	Section Width (mm)	Max. Load Capacity (kg)	Cold Inf. Pressure (kPa)	Weight (kg)
23.5R35											
26.5R35											
29.5R25	E4/L4	**	50	200B	25.00/3.5	59	1875	750	14000	525	652
			10	208A2	25.00/3.6						

COMING SOON! Q1 2016

WB08

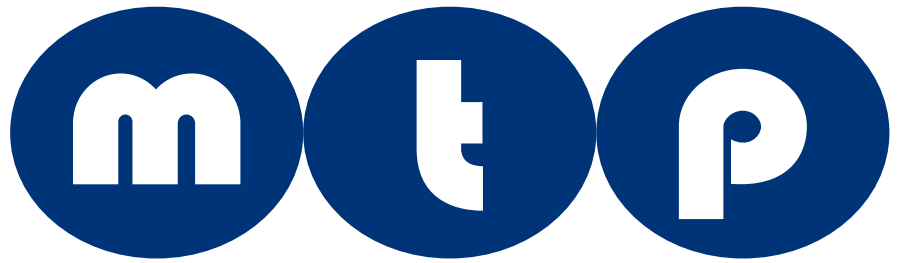
- ✓ MTP WB08 is designed for rigid dump trucks
- ✓ Aggressive lug design with large block at tread centre provides excellent traction and braking on rough roads with mud or gravel
- ✓ Special tread compounds resist chipping and chunking in rugged off road conditions



Size	TRA Code	Load Symbol	Max. Speed (km/h)	Load Index	Standard Rim	Tread Depth (mm)	Overall Diameter (mm)	Section Width (mm)	Max. Load Capacity (kg)	Cold Inf. Pressure (kPa)	Weight (kg)
14.00R25	E4	***	50	169B	10.00/1.5	38	1420	375	5800	700	193
18.00R33	E4/L4	**	50	191B	13.00/2.5	54	1860	478	10900	700	469
			10	199A2	13.00/2.5				13600	550	
24.00R35	E4	**	50	209B	17.00/3.5	65	2175	655	18500	700	774

NEW!

NEW!



WB05

- ✓ MTP WB05 is designed for wheel loaders requiring maximum traction
- ✓ L5 extra deep and aggressive open tread design
- ✓ The tread blocks provide stable ground contact



Size	TRA Code	Load Symbol	Max. Speed (km/h)	Load Index	Standard Rim	Tread Depth (mm)	Overall Diameter (mm)	Section Width (mm)	Max. Load Capacity (kg)	Cold Inf. Pressure (kPa)	Weight (kg)
23.5R25	L5	**	10	201A2	19.50/2.5	76	1675	595	14500	650	422
26.5R25	L5	**	10	209A2	22.00/3.0	86	1800	675	18500	650	564
29.5R25	L5	**	10	216A2	25.00/3.5	94	1920	750	22400	650	749
35/65R33	L5	**									

IN DEVELOPMENT! Q4 2016

WB10

- ✓ MTP WB10 is designed for wheel loaders
- ✓ Non-directional pattern provides excellent grip and traction on rocky surfaces
- ✓ The rock flush pattern and shoulder protector provides excellent cut resistance



Size	TRA Code	Load Symbol	Max. Speed (km/h)	Load Index	Standard Rim	Tread Depth (mm)	Overall Diameter (mm)	Section Width (mm)	Max. Load Capacity (kg)	Cold Inf. Pressure (kPa)	Weight (kg)
23.5R25	L5	**	10	201A2	19.50/2.5	76	1675	595	14500	650	461
26.5R25	L5	**	10	209A2	22.00/3.0	86	1800	675	18500	650	567
29.5R25	L5	**	10	216A2	25.00/3.5	94	1920	750	22400	650	752

NEW!

NEW!

NEW!

All Steel Radial Construction - Multifunctional

WB07

- ✓ MTP WB07 is designed for graders
- ✓ Aggressive non directional blocks provide a high tractive capacity on soft and muddy conditions
- ✓ Special sidewall protector provides lower operating cost on rough roads



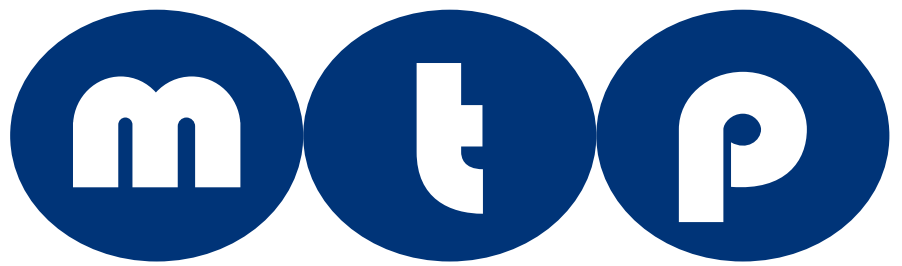
Size	TRA Code	Load Symbol	Max. Speed (km/h)	Load Index	Standard Rim	Tread Depth (mm)	Overall Diameter (mm)	Section Width (mm)	Max. Load Capacity (kg)	Cold Inf. Pressure (kPa)	Weight (kg)	
14.00R24	G2/L2	*	40	153A8	8.00TG	26	1350	360	3650	375	136	NEW!
16.00R24												IN DEVELOPMENT! Q2 2016

WB06

- ✓ MTP WB06 is designed for mobile cranes and off-road applications
- ✓ Improved irregular wear pattern provides greater operator comfort
- ✓ The aggressive self-cleaning tread design provides excellent traction in severe off-road conditions



Size	TRA Code	Load Symbol	Max. Speed (km/h)	Load Index	Standard Rim	Tread Depth (mm)	Overall Diameter (mm)	Section Width (mm)	Max. Load Capacity (kg)	Cold Inf. Pressure (kPa)	Weight (kg)	
385/95R25	E2	***	80	170F	10.00/1.5	24	1369	379	6000	900	145	NEW!
445/95R25	E2	***	80	176F	11.25/2.0	28	1481	435	6700	900	204	NEW!
525/80R25	E2	**	80	176F	17.00/2.0	29	1490	520	7750	700	240	NEW!



WB01



WB02



WB03



WB04



WB05



WB06



WB07



WB08



WB09



WB10



Universal Tyre Trading B.V.

With more than three decades of experience in the tyre industry, this Dutch company has a broad network of OTR tyre suppliers and customers all over the world. This broad network results in a comprehensive list of reliable tyre manufacturers and wholesalers to find you the right tyre for your business with a competitive price.

We are specialized in tyres for heavy mining and construction equipment operating in challenging applications. As global supplier, Universal Tyre Trading B.V. is able to deliver to any location or port in the world, in any number required.

Exclusive dealer:



Universal Tyre Trading

P.O. Box 436
5140 AK Waalwijk
The Netherlands

Elzenweg 7
5144 MB Waalwijk
The Netherlands

Phone: +31 416 82 00 32
Fax: +31 416 82 00 33
info@universaltyretrading.com

